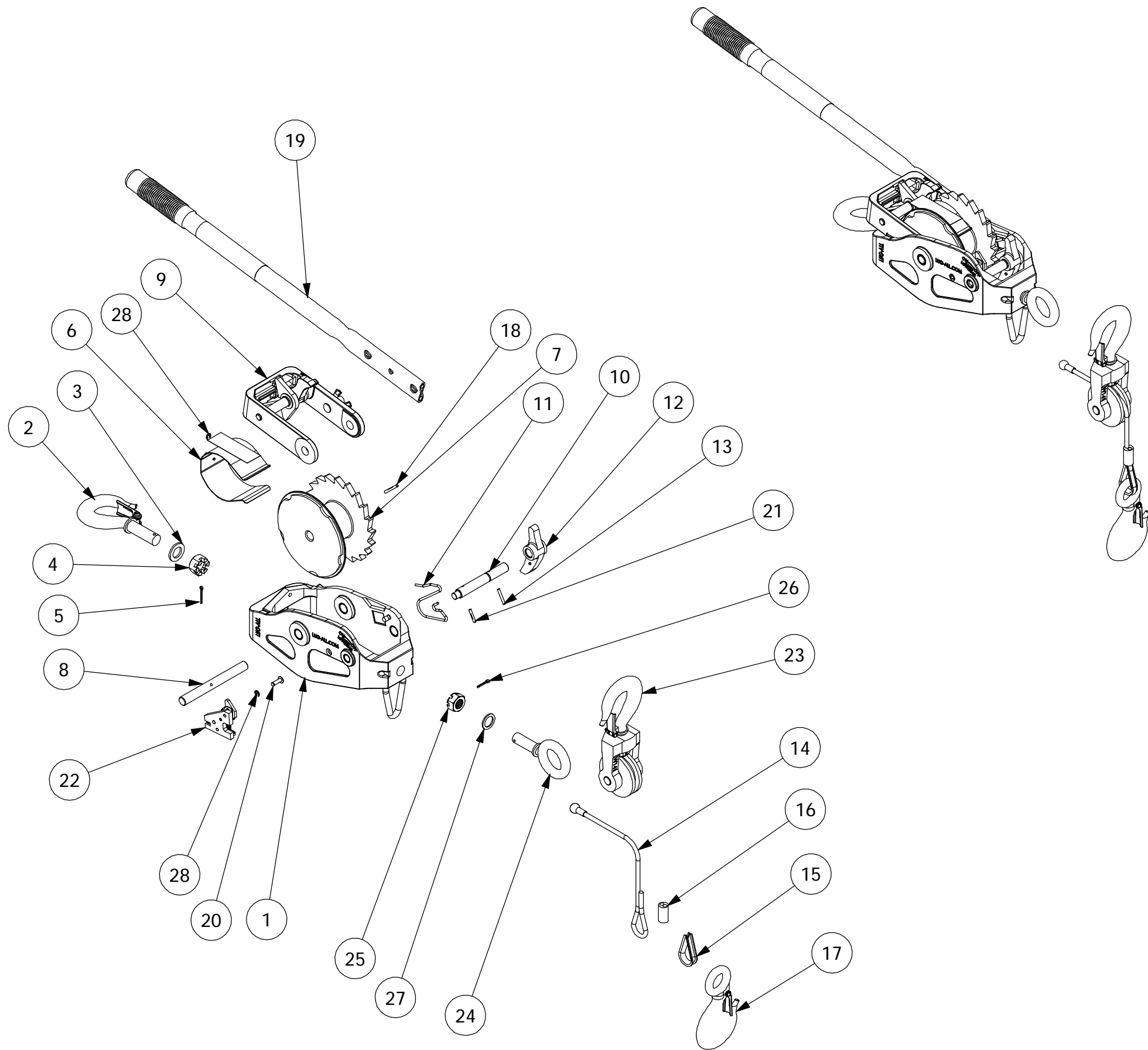


THE INFORMATION CONTAINED IN THIS DRAWING IS THE SOLE PROPERTY OF LUG-ALL CORPORATION. ANY REPRODUCTION IN PART OR AS A WHOLE WITHOUT THE WRITTEN PERMISSION OF LUG-ALL CORPORATION IS PROHIBITED.



ITEM	PART NO.	DESCRIPTION
1	W280-R	MAIN FRAME W/BUSHINGS
2	W207-BLACK	SHANK HOOK
3	W181	HOOK WASHER
4	W182	HOOK NUT
5	W1005	COTTER PIN
6	W183-2250	CABLE SHIELD ASSY.
7	W287	DRUM
8	W194	DRUM SHAFT
9	W855	U-FRAME ASSEMBLY
10	W186	MAIN FRAME PAWL SHAFT
11	W200	MAIN FRAME PAWL SPRING
12	W203-D	MAIN FRAME PAWL
13	W123	ROLL PIN
14	W210	CABLE & DRUM ANCHOR
15	W139	THIMBLE
16	W125	SLEEVE TYPE CABLE CLAMP
17	W137-BLACK	EYE TYPE HOOK
18	W134	DRUM SHAFT LOCKING PIN
19	W209-ENG	REVERSIBLE HANDLE
20	W1132	CARRIER PIN
21	W279	ACTUATING PIN ON PAWL SHAFT
22	W269	CARRIER & ACTUATING ASSEMBLY
23	W803-BLACK	PULLEY BLOCK ASSEMBLY
24	W165-BLACK	EYE BOLT
25	W122	HOOK NUT
26	W406	COTTER PIN
27	W118	HOOK WASHER
28	W162	RETAINING RING

LUG-ALL CORPORATION
650 LINCOLN RD., BRIDSBORO, PA 19508

**MEDIUM FRAME
 WIRE ROPE
 238-R
 ASSEMBLY**

SIZE B	DWG. NO. 238-R	REV. B
CAD FILE: 238-R		SHEET 1 OF 1